

Quantock Road
Bridgwater
TA6 7EQ




JOSEPH CASSON
the estate agency your home deserves





£350,000

- Extended Semi-Property
- Three Bedrooms & Study
 - Two Reception Rooms
- Open-Plan Kitchen/Diner
- Utility Room & Cloakroom
 - Enclosed Rear Garden
 - Ample Parking
- Double Glazing & Gas Central Heating
- No Onward Chain

Joseph Casson is pleased to present this extended 1930's bay-fronted semi-detached property offering spacious and extended accommodation, with two inviting reception rooms and an open-plan kitchen/diner.

The upper floors reveal three bedrooms, a study, and two bathrooms—ideal for comfortable family living!

ACCOMMODATION

Discover this impressive semi-detached home featuring: an inviting entrance hallway, lounge with bay window, spacious open-plan kitchen/dining area, utility room, and an additional reception/bedroom with a cloakroom on the ground floor.

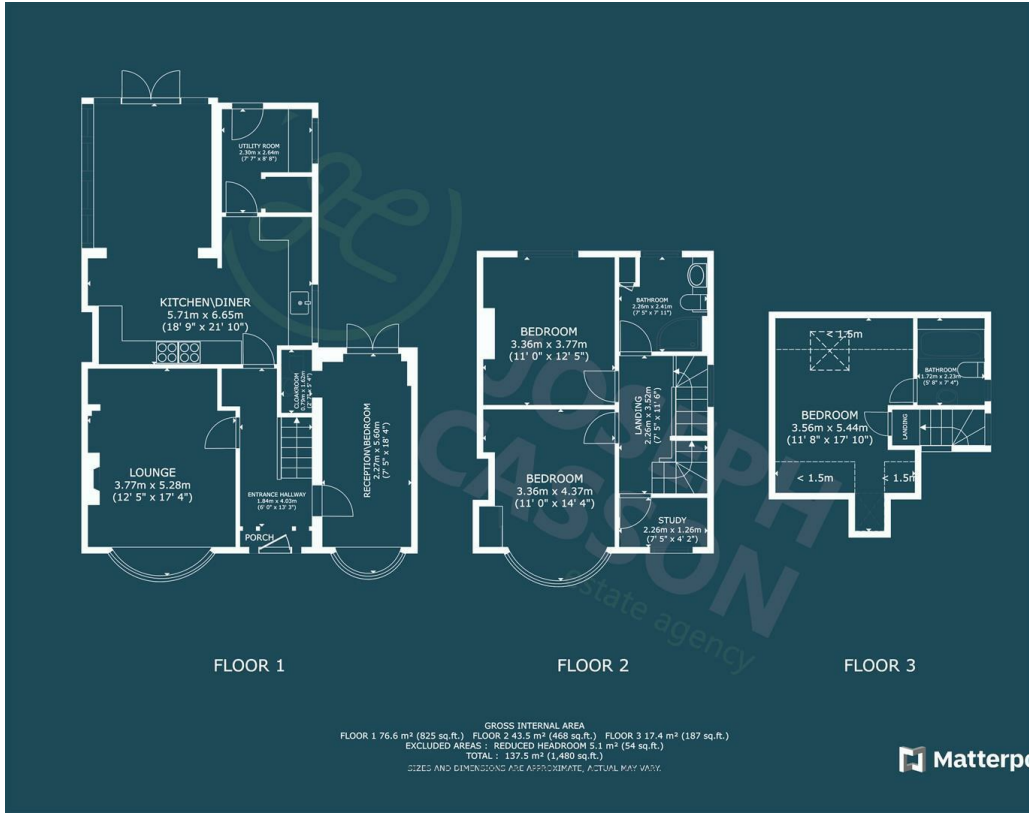
Upstairs boasts two double bedrooms, a study, and a shower room, while the top floor offers another bedroom with an en-suite bathroom.

Enjoy ample parking on your driveway and a low-maintenance enclosed rear garden!

LOCATION

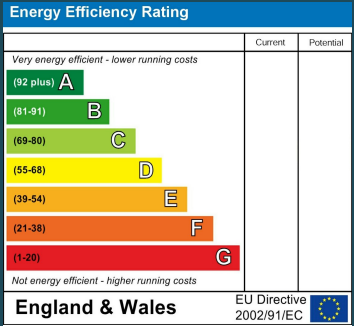
Perfectly situated with excellent access to Bridgwater town centre, residents can enjoy the convenience of nearby amenities, shops, and restaurants. Additionally, the property is located within close proximity to sought-after schools, making it an ideal choice for families.



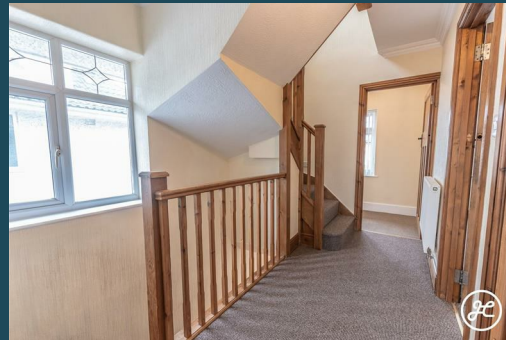


Council Tax Band

D



Agents Note: Whilst every care has been taken to prepare these particulars, they are for guidance purposes only. All measurements are approximate and are for general guidance purposes only and whilst every care has been taken to ensure their accuracy, they should not be relied upon and potential buyers/tenants are advised to recheck the measurements



Joseph Casson Estate Agency -
Bridgwater
1 Friarn Lawn
Bridgwater
Somerset
TA6 3LL

Contact
01278258005
office@josephcasson.co.uk
www.josephcasson.co.uk



JOSEPH CASSON

the estate agency your home deserves